

Harmony Platform

HR Module with Advanced Fluorescence Technology



The **AFT HR Module of the Harmony Platform** provides innovative technology for photoepilation. It employs proprietary AFT pulsed light technology in the red wavelength (650-950nm) along with adjustable parameters for effective hair removal.

- **Fast** – large spot size (6.4 cm²) enables rapid treatment
- **Easy to use** – ergonomic handpiece
- **Permanent hair reduction** - on all skin types and the broadest range of hair colors
- **Easy add-on** with high potential for increased patient flow
- **No downtime** – safe and efficacious results

The Most Advanced Light-Based Technology for Photoepilation

To achieve precise, selective absorption of the light energy, the HR handpiece employs two novel electro-optical components:

- **Advanced Fluorescence Technology (AFT™)**
A special filtering system converts the unused shortwave light into the visible red spectrum (650-950nm), increasing spectral emission and penetration, without excess energy levels for safer, more effective treatments.
- **Equally Distributed Fluence (EDF™)** An innovation in electronics which enables continuous square-shaped pulsing for moderate peak power throughout the entire pulse, for efficacious, safe results.



Harmony



Harmony System: Multi-Application, Multi-Technology Platform

- The most versatile, expandable light and laser system on the market.
- 10 different treatment heads for numerous combination therapy protocols
- 8 distinct technologies:
 - ▶ **AFT**
 - ▶ UVB
 - ▶ 532nm Fd Q-Switched Nd:YAG
 - ▶ 1320nm Nd:YAG
 - ▶ Near-infrared light
 - ▶ 1064nm LP Nd:YAG
 - ▶ 1064nm Q-Switched Nd:YAG
 - ▶ 2940nm Er:YAG
- Over 60 FDA cleared indications, including:
 - ▶ Skin rejuvenation
 - ▶ Acne
 - ▶ Vascular lesions
 - ▶ Hypopigmentation
 - ▶ Skin resurfacing
 - ▶ Tattoo removal
 - ▶ **Hair removal**
 - ▶ Acne scarring
 - ▶ Pigmented lesions
 - ▶ Laser peeling
 - ▶ Cutaneous lesions
 - ▶ Fine lines and wrinkles
- Customizable and upgradeable as your aesthetic practice grows
- Plug&Play technology – no downtime when upgrading
- Low cost of ownership – high return on investment
- Easy to use – selected preprogrammed parameters

Before

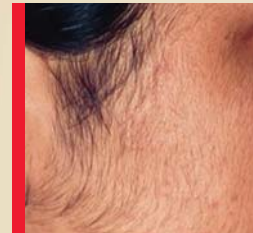


After



Photos Courtesy: Yaron Assaf, M.D., Hadera Laser Clinic, Medical Office Building, Hadera, Israel
AFT 650 HR Module After 2 Tx.

Before



After



Photos Courtesy: Prof. Arie Orenstien, M.D. Sheba Medical Center, Tel Aviv, Israel
AFT 650 HR Module after 5 Tx. 18J/cm²

Technical Specifications of HR Module

Light Source	Pulsed Light with AFT and EDF
Spectrum	650-950nm
Energy Density (Fluence)	5-20 J/cm ²
Treatment Area (Spot Size)	40x16 mm (6.4 cm ²)
Pulse Duration (Msec.)	30, 40, 50
Pulse Repetition Rate	1/3 Hz
Harmony System Specifications	
Electrical	100-120 VAC, 5A, 50/60 Hz 220-240 VAC, 5A, 50/60 Hz
Weight	System: 88 lbs.(40 kg.) Cart: 88 lbs. (40 kg.)
System Dimensions	26" x 18" x 16" (65 x 45 x 40 cm)
Cart* Dimensions	22" x 22" x 30" (55 x 55 x 75 cm)

* Optional

www.almalasers.com



CE 0473



United States
6555 NW 9th Avenue
Suite 303
Fort Lauderdale, FL 33309
Tel: (954) 229-2240
Fax: (954) 229-8310

Headquarters
7 Haeshel St., P.O.B 3021
Caesarea Industrial Park
Caesarea, Israel 38900
Tel: +972-4-627-5357
Fax: +972-4-627-5368

©2006, Alma Lasers, Ltd. All rights reserved. Alma[®] Lasers Ltd., its logo, Accent[®], Aria[™], Harmony[™], Sonata[®], Soprano[®], DualChill[™], AFT[™], EDF[™], Magic of Light[™] and BlendMode[™] are the trademarks of Alma Lasers, Ltd. Product specifications are subject to change without notice.

Classification: Class II Laser Product
Laser Model: AFT 650 HR Module
Serial Number: 123456789
Date of Manufacture: 01/01/06
Made in China
© 2006 Alma Lasers Ltd.